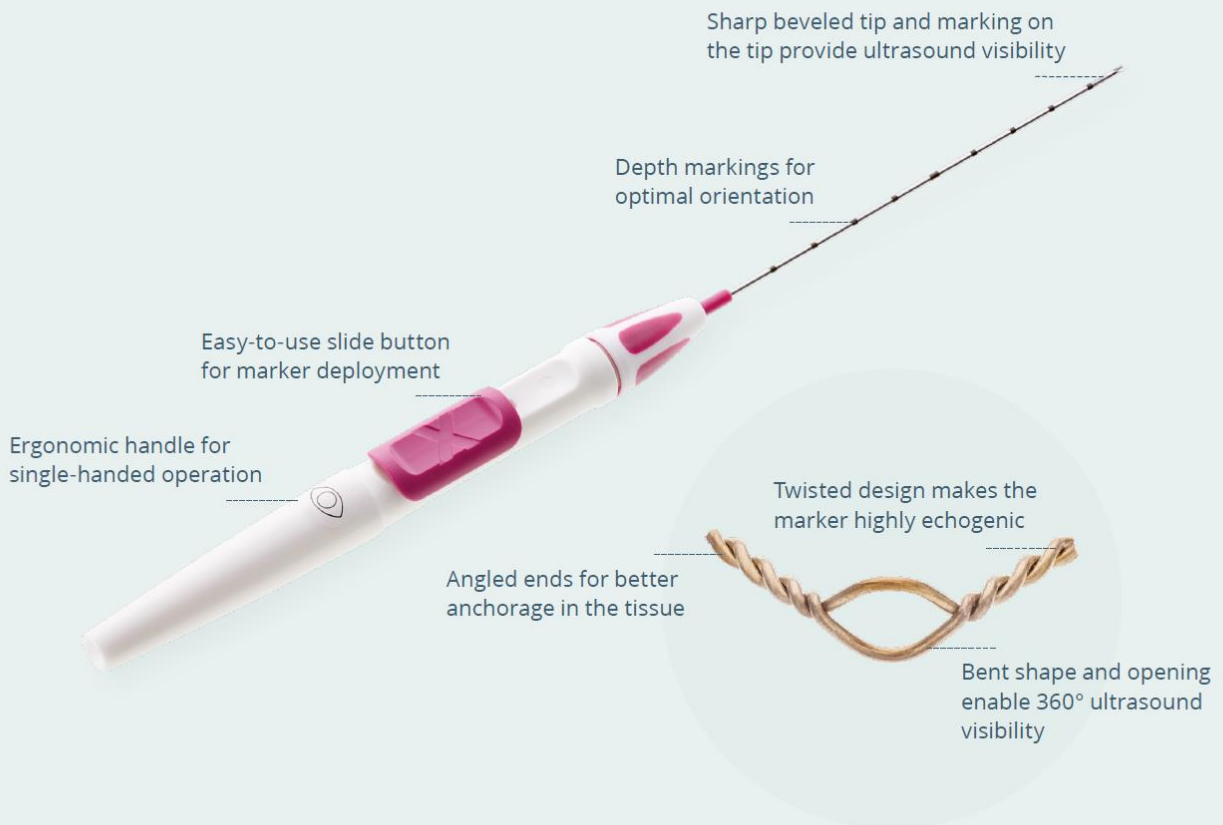


# Tumark<sup>®</sup> Eye

Advanced biopsy site marking system



*Excellence through Customer Satisfaction*

**K.M. Medical, Inc.**  
65 Parker St. Unit 2  
Newburyport, MA 01950  
**P:** 978-465-4689 **F:** 978-914-6106  
**Email:** info@knmedical.com

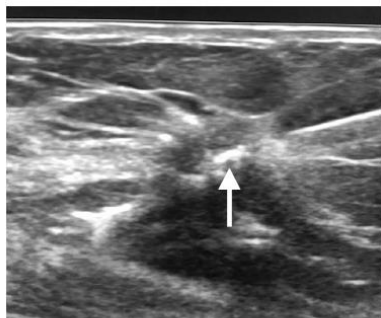
## Tumark® Eye

Highly distinctive shape and 360° ultrasound visibility

The Tumark® Eye biopsy site marker provides tissue fixation and visibility under ultrasound, X-ray and MRI. Thanks to its angled shape with twisted ends and an open center, it is visible 360° under ultrasound. The non-resorbing marker material expands into a distinct marker shape directly after the puncture is made and becomes anchored in the breast tissue. An ergonomic handle enables single-handed use for image-guided operation.

### The Tumark® family – exceptional solution for site marking

Biopsy site markers from the Tumark® family allow for exact and patient-friendly marking of biopsy sites and suspicious lesions in the breast tissue, before or during neoadjuvant chemotherapy. This is ensured by 18 gauge thin, extremely sharp puncture cannulas and the ergonomic handle design for single-handed operation. All markers are made of the biocompatible implant material Nitinol and remain visible in the tissue.



Tumark® Eye  
biopsy site marker  
under ultrasound



	Product code	Gauge	Ø	Length
Tumark® Eye	271510	18	1.20 mm	100 mm
Tumark® Eye	271512	18	1.20 mm	120 mm



### Benefits at a glance

-  Accurate anchoring  
Marker shape expands upon deployment for fixation in the tissue
-  Single-handed  
Ergonomic handle allows for image-guided operation
-  Visibility  
Intelligent marker design provides visibility under ultrasound, X-ray and MRI



*Excellence through Customer Satisfaction*

**K.M. Medical, Inc.**  
65 Parker St. Unit 2  
Newburyport, MA 01950  
**P:** 978-465-4689 **F:** 978-914-6106  
**Email:** info@knmedical.com