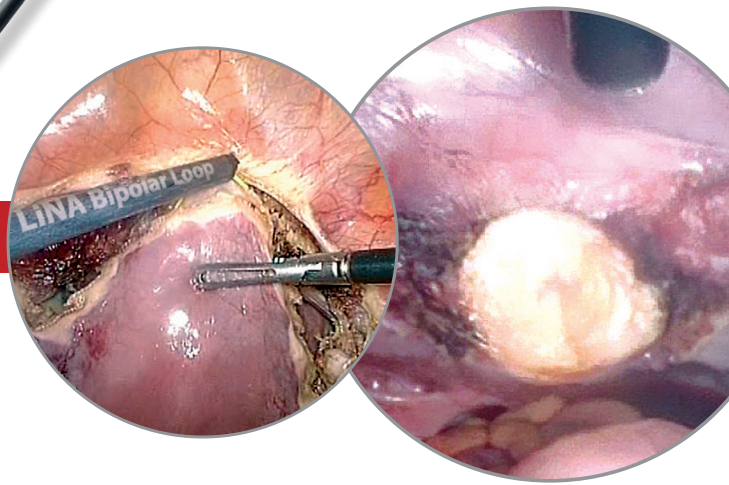


LiNA Bipolar Loop™

*Laparoscopic Supracervical Hysterectomy (LSH)
and subserosal pedunculated myomectomy*

Amputation in a few seconds





LiNA Bipolar Loop™

Laparoscopic Supracervical Hysterectomy (LSH)
and subserosal pedunculated myomectomy

Safety. Low energy, high effect.

Bipolar technology offers immediate cutting action and improved safety with only 55-70 watts of energy. No grounding pad needed.

Visualization is aided by a protective ceramic tip, allowing for optimum accuracy in loop positioning.

The protective ceramic tip in conjunction with the gold insulation isolates the cutting action to the tissue between the two electrodes for improved safety.

Fast. Clean cut in seconds.

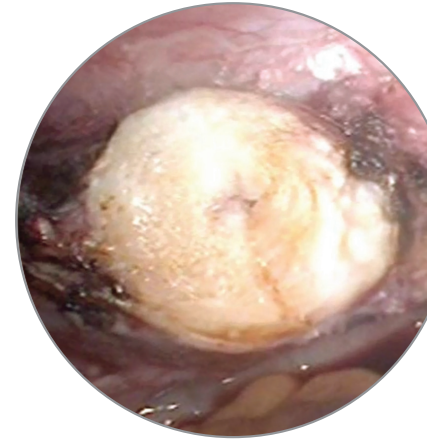
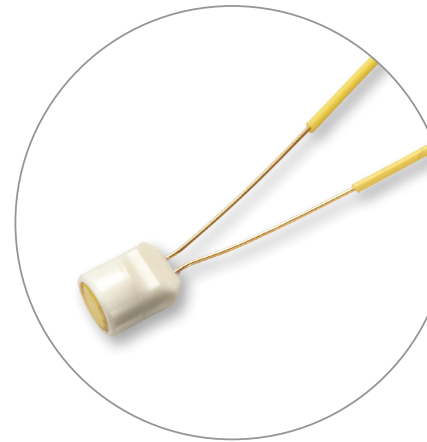
Reduce your cervix amputation time by at least several minutes.

Cut and coagulation in one step leaves a clean hemostatic surface, which reduces the need for further coagulation of the cervical stump or peduncle.

Simple. No special generator required.

LiNA Bipolar Loop™ is compatible with standard electro-surgical units to assure quick and easy setup.

3 meter cable with standard 2-pin 4mm male bipolar plug.



Ordering Information:

Product code	Description	UOM
BL-160	LiNA Bipolar Loop™ – Endoscopic Bipolar Loop for LSH & Myomectomy. Small Loop - 160mm x 80mm. Sterile, single use	Box of 6 ea
BL-200	LiNA Bipolar Loop™ – Endoscopic Bipolar Loop for LSH & Myomectomy. Large Loop - 200mm x 100mm. Sterile, single use	Box of 6 ea
BL-240	LiNA Bipolar Loop™ – Endoscopic Bipolar Loop for LSH & Myomectomy. X-Large Loop - 240mm x 120mm. Sterile, single use	Box of 6 ea

Distributor:

LiNA Medical USA

Norcross, GA 30093, USA

Tel: +1 (855) 546-2633 | Fax: +1 (678) 380-0500 | info@linamed.com | www.linamed.com

©2020 LiNA Medical ApS. All rights reserved. All products may not be available for sale in all geographies. Please contact your local LiNA Medical representative for information about products available in your area. This information is intended for healthcare professionals. If you are a patient seeking more information, please consult your healthcare provider. Before using any LiNA product, always refer to the IFU included in our packaging for complete indications for use, contraindications, warnings, precautions, and instructions.

LiNA is a registered trademark of LiNA Medical in EU, US and CN.

LiNA Medical ApS

• Formervangen 5
DK-2600 Glostrup
Denmark

• Tel: +45 43 29 66 66
Fax: +45 43 29 66 99
info@lina-medical.com

• www.lina-medical.com
CVR: 10054974

EN ISO 13485:2016
Quality Management System

